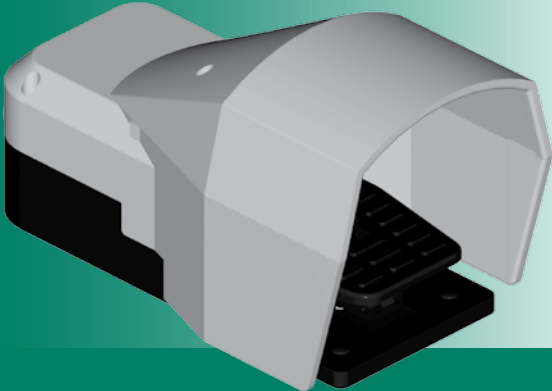


# FOOT SWITCHES



**SPRINGER**  
controls company

Index

0

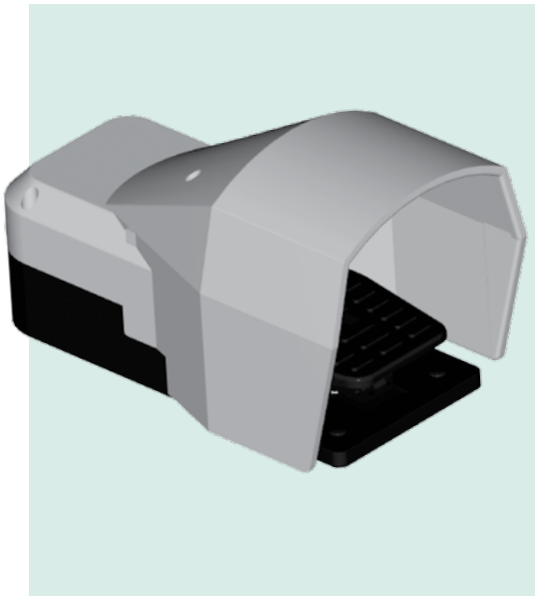
**Springer Controls** is the North America Distributor for Tecno Elettrica Ravasi®. We offer 2 types of foot switches with either standard or large cover availability. Each model offers outstanding quality, heavy-duty performance and great dependability

## Foot Switches

Description / Technical Specifications .....	02
Model Types & Dimensions .....	03

## FOOT-SWITCHES; DESCRIPTION & TECHNICAL SPECS

02



**Springer Controls** offer a complete line of Tecno Elettrica Ravasi (T.E.R.) series foot switches. The industrial foot switches can be used for the auxiliary control of motors on machine tools, conveyors, lifts, and auxiliary foot operated devices.

Both, shock-resistant thermoplastic and die-cast aluminum units are available, either having a standard cover or a larger cover to fit a safety shoe. All foot switches are fitted with rubber feet to prevent slipping and increase the stability of the equipment, the thermoplastic units have an iron core base to help stability. All are equipped with a safety lock to prevent accidental tripping.

The foot switches are equipped with one or two snap action (1 N.O. + 1 N.C. or 2 N.O. + 2 N.C.) contact elements. The N.C. contacts are of the positive opening type.

Double-unit foot switches are available by request along with "slow-action" contacts or 3 contact switch units. Consult factory.

### Foot-Switch Part# & Pricing

Number of Contacts	Contacts	Shock-resistant Thermoplastic Series				Die-cast Aluminium Series			
		Std. Cover Catalog No	Price	Large Cover Catalog No	Price	Std. Cover Catalog No	Price	Large Cover Catalog No	Price
1	1 N.O. + 1 N.C.	PF18620010	\$126	PF54612100	\$145	PF54615100	\$307	PF54617100	\$342
2	2 N.O. + 2 N.C.	PF18620025	\$152	PF54612200	\$171	PF54615200	\$333	PF54617200	\$368

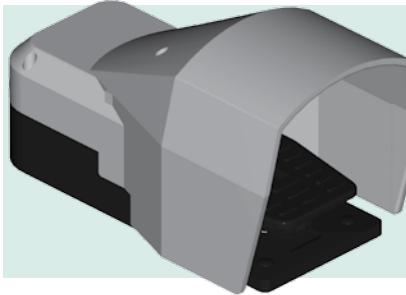
### Technical Specifications

Conformity to Community Directives	73/23/CEE	93/68/CEE
Conformity to Standards	EN 60947-1	EN 947-5-1 EN 60204-1
Ambient Temperature	Storage	-40 °C / +70 °C
	Operational	-25 °C / +70 °C
Protection Degree	IP 53	
Insulation Category	Class I	
Cable Entry	Cable Clamp M20	
Approvals	CE (Switches = UL, (c)UL )	
Switch Rated Operational Current	3A	
Switch Rated Operational Voltage	250V	
Switch Rated Thermal Current	10A	

**Discount Schedule SC-20**

**FOOT-SWITCHES; DESCRIPTION & TECHNICAL SPECS**

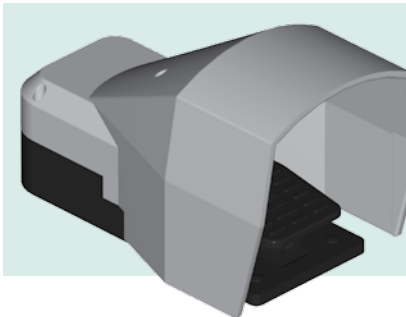
**Industrial Foot-Switch; Standard Cover**



- Available in thermoplastic or die-cast aluminium
- 1 or 2 switch contacts available. (Consult factory for 3 switch)

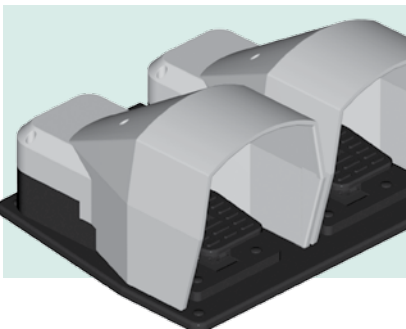
**03**

**Industrial Foot-Switch; Large Cover**



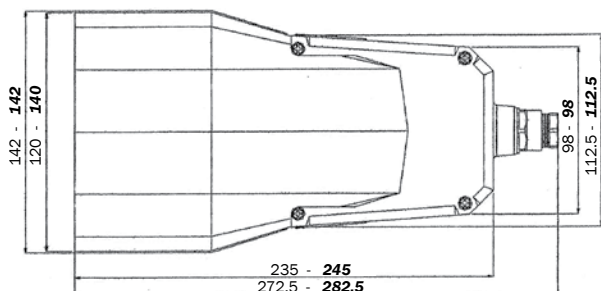
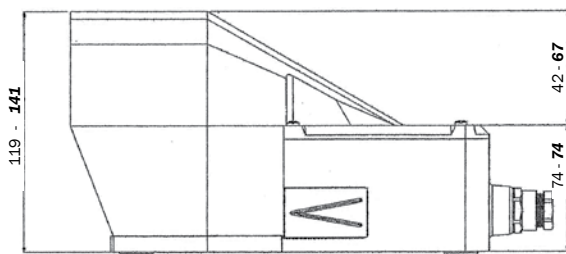
- Available in thermoplastic or die-cast aluminium
- 1 or 2 switch contacts available. (Consult factory for 3 switch)
- Larger Cover; designed for steel toed safety shoes

**Industrial Foot-Switch; Double**



- Consult factory for pricing and availability of a “double foot-switch”
- Double foot-switches are fixed on a metal plate and can be supplied with emergency stop mushroom push-button.

**DIMENSIONS (mm)**



- Foot switch with standard protection
- **Foot switch with large protection**

## NOTES

04